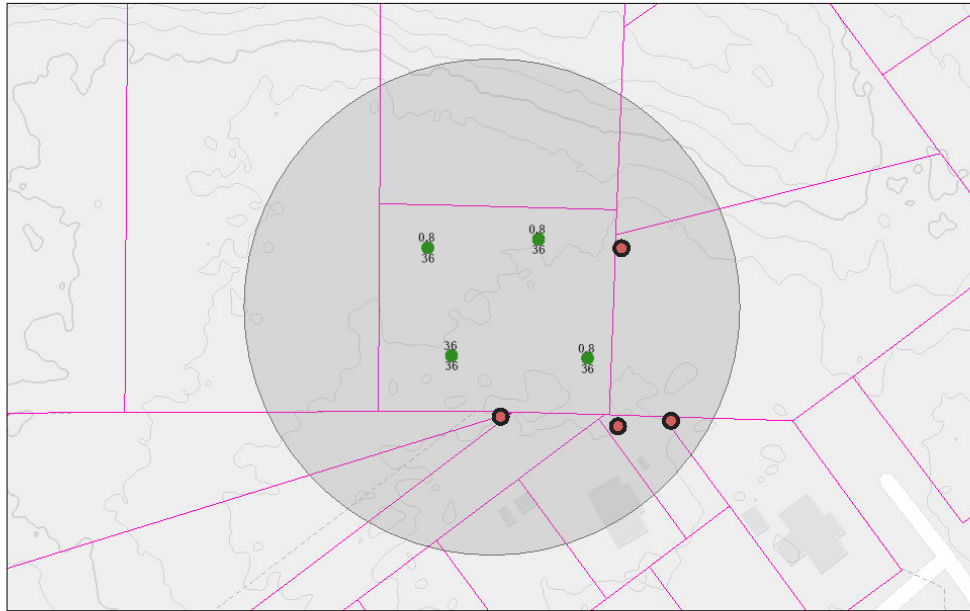




# Parcel ID: 0034225 TBD Eastman Rd - Soil Evaluation Report

## Area of Interest (AOI) Information

Dec 17 2025 8:45:37 Eastern Standard Time



Points  
 ● EIP  
 Borings  
 ● Conventional

North Carolina Parcels (Polygons) - Parcels (polys)  
 2' Contours  
 255  
 0

1:1,128  
 0 0.01 0.01 0.03 mi  
 0 0.01 0.03 0.05 km  
 Sources: Esri, TomTom, Garmin, FAO, NOAA, USGS, (c) OpenStreetMap contributors, and the GIS User Community. Sources: Esri, TomTom, Garmin.

**An area was identified that may be possible to use for a 480GPD/4BR subsurface wastewater system. The system type and exact location would need to be confirmed with a field layout/design. Client will need to confirm there are no restrictions, easements, right of ways or other encumbrances on the property that would limit the use of the area shown on the report.**



## Summary

Name	Count	Area(ft <sup>2</sup> )	Length(ft)
Borings	4	N/A	N/A
Points	4	N/A	N/A
System Description	0	N/A	N/A

## Borings

#	Boring Type	H1_Depth	H1_Mineral	H1_Moist_C	H1_Plastic	H1_Stickin	H1_Structu	H1_Texture
1	Conventional	36	Non Expansive	Loose	Non Plastic	Non Sticky	Gr	Loamy Sand
2	Conventional	36	Non Expansive	Loose	Non Plastic	Non Sticky	Gr	Loamy Sand
3	Conventional	36	Non Expansive	Loose	Non Plastic	Non Sticky	Gr	Loamy Sand
4	Conventional	36	Non Expansive	Loose	Non Plastic	Non Sticky	Gr	Loamy Sand

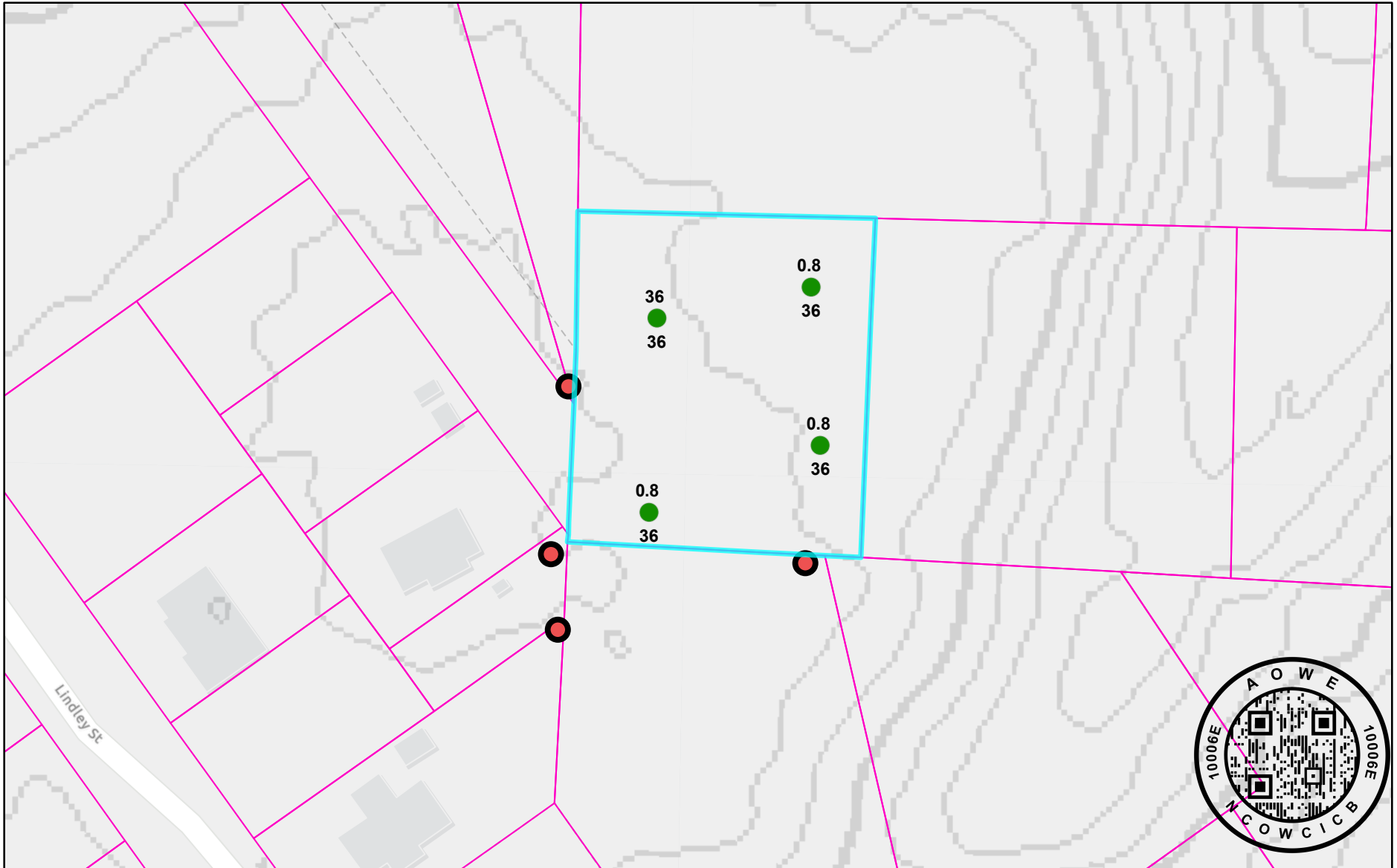
#	H2_Depth	H2_Mineral	H2_Moist_C	H2_Plastic	H2_Stickin	H2_Structu	H2_Texture	H3_Depth
1	N/A	N/A	N/A	N/A	N/A	N/A	N/A	N/A
2	N/A	N/A	N/A	N/A	N/A	N/A	N/A	N/A
3	N/A	N/A	N/A	N/A	N/A	N/A	N/A	N/A
4	N/A	N/A	N/A	N/A	N/A	N/A	N/A	N/A

#	H3_Mineral	H3_Moist_C	H3_Plastic	H3_Stickin	H3_Structu	H3_Texture	Landscape_	LTAR
1	N/A	N/A	N/A	N/A	N/A	N/A	Linear	0.80
2	N/A	N/A	N/A	N/A	N/A	N/A	Linear	0.80
3	N/A	N/A	N/A	N/A	N/A	N/A	Linear	0.80
4	N/A	N/A	N/A	N/A	N/A	N/A	Linear	36.00






#	Notes	Saprolite	Slope	Soil_Wetne	Usable_Dep	Count
1	N/A	N/A	2-5%	N/A	36	1
2	N/A	N/A	2-5%	N/A	36	1
3	N/A	N/A	2-5%	N/A	36	1
4	N/A	N/A	2-5%	N/A	36	1

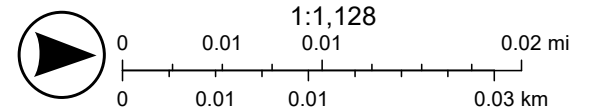
## Points

#	Point_Desc	Point_Type	Count
1	N/A	EIP	4



12/17/2025

- Points
  -  EIP
- Borings
  -  Conventional
-  North Carolina Parcels (Polygons) - Parcels (polys)
- 2' Contours
  -  255
  -  0



Sources: Esri, TomTom, Garmin, FAO, NOAA, USGS, (c) OpenStreetMap contributors, and the GIS User Community, Sources: Esri, TomTom, Garmin,